

Client \_\_\_\_\_ Quantity \_\_\_\_\_  
 Project \_\_\_\_\_ Position \_\_\_\_\_

## Snack GN counter 3 doors

Model: TS16/1B-490

Cod: T10380000404

Snack refrigerated counter 3 doors, length 1600 mm, counter body height 490 mm, without top. Plug-in refrigeration unit, D energetic class, 5 heavy duty climatic class and R290 ecological refrigerant gas. Temperature range -15°-22°C with ventilated refrigeration. Equipment: 1 GN1/1 plastic coated shelf. Each compartment can be configured with 1/1, 1/2+1/2 drawers. Anti-corrosion treated evaporator and hot gas defrosting. 60 mm insulation thickness - HFO with high insulation performance and low environmental impact (CFC, HCFC, HFC free). AISI 304 stainless steel handle and magnetic triple chamber door gasket, easily replaceable. Reversible, self-closing door opening with 105° stop. AISI 304 stainless steel interior/exterior including external back. Rounded inner corners for easy cleaning. The reinforced modular base in colaminated steel allows installation on wheels, feet, mobile or masonry plinths. Replaceable refrigerant system FSS - Fast Service System - for quick and easy service. Prepared for connection to Cosmo - wi-fi remote supervision system - and ModBus/RTU Rs485 connection.



### Technical data

|                          |                                 |
|--------------------------|---------------------------------|
| Top:                     | Without top                     |
| Gross capacity:          | 278 lt                          |
| Temperature range:       | -15°-22°C                       |
| Refrigerant unit:        | Plug-in                         |
| Energetic class:         | D                               |
| Energy efficiency index: | 51,3                            |
| Annual consumption:      | 1535 kW/h annum                 |
| 24h consumption:         | 4,205 kW/h/24h                  |
| Climate class:           | 5                               |
| Cooling gas:             | R290 (GWP=3)                    |
| Refrigerant Charge:      | --                              |
| Defrost:                 | Hot gas                         |
| Body height:             | 490 mm                          |
| Valve:                   | Supplied standard with solenoid |
| Dimensions:              | 1600×680×590 mm                 |
| Packing dimensions:      | 1875×800×998 mm                 |
| Net / gross weight:      | 125 Kg / 135 Kg                 |
| Net / gross volume:      | 158 lt / 278 lt                 |
| Voltage:                 | 220-240 V - 50 Hz               |
| Total rate:              | 850W - 3,9A                     |
| Cooling capacity:        | 569 W*                          |
| *:                       | Evap. -30°C Cond. +55°C         |

### Features

|                              |  |
|------------------------------|--|
| Standard equipment:          | 3 slides, 3 plastic coated GN1/1 shelves   |
| Control:                     | Electronic, display flush with the panel   |
| Doors:                       | 3 doors, self-closing, reversible with 105° stop                                   |
| Door gasket:                 | Magnetic, triple chamber and easily replaceable                                    |
| Insulation:                  | 60 mm thickness - CFC/HCFC free  |
| Exterior/interior finishing: | Exterior interior and back in AISI 304 stainless steel. Base in colaminated steel. |
| Inner corners:               | Rounded for easy cleaning and ensuring maximum hygiene                             |
| Handle:                      | Stainless steel AISI 304, 2 mm thick   |
| Racks and slides:            | Stainless steel AISI 304   |
| Feets:                       | AISI 304 stainless steel adjustable h 100/150 mm                                   |
| Cosmo:                       | Predisposed for Cosmo Hub connection   |

In order to constantly offer the best possible products we reserve the right to make changes on technical specifications without incurring any obligation for equipment previously or subsequently sold.

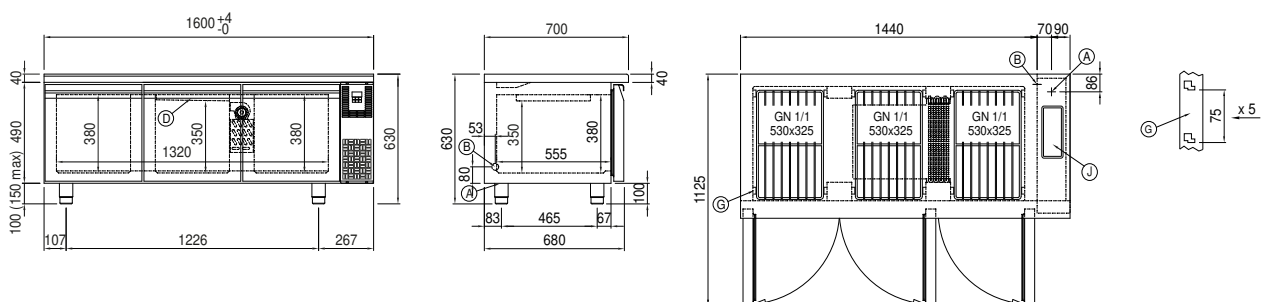
## Accessories and variants

|                                       |  |
|---------------------------------------|--|
| Drawers 1/1                           | Other special voltage                                |
| Drawers 1/2                           | Alimentazione frequenza 60Hz                         |
| Special size of technical compartment | Other special voltage                                |
| Drawers 1/1                           | Adjustable feet h 145/195 mm                         |
| Drawers 1/2                           | 4 Swivel and brake castors h 128 mm                  |
| Technical compartment on the left     | Brackets for GN pans for drawer                      |
| Lock with key for drawer 1/1          | GN1/2 container + lids kit for drawer, h 150 mm      |
| Special size of technical compartment | GN1/3 container + lids kit for drawer, h 150 mm      |
| Technical compartment on the left     | Bottles shelf, stainless steel coating for shelf 350 |
| Lock with key for drawer 1/2          | Stainless steel shelf GN1/1                          |
| RAL customisable colouring            | Plastic coated shelf GN1/1                           |
| Lock with key for drawer 1/1          | Pair of type C slides 505 mm                         |
| Lock with key for drawer 1/2          | IP44 schuko socket with cover                        |
| Plug-in water unit                    | Serial interface, RS485 cable                        |
| Alimentazione frequenza 60Hz          | Cosmo cable connection kit                           |
| RAL customisable colouring            | Cosmo wifi connection kit                            |
| Plug-in water unit                    | Removable plinth GN 2D h 100 mm                      |

## COSMO - wi-fi control

Cosmo is The Nice Kitchen's exclusive wi-fi technology that allows Coldline, Modular and Nevo appliances to be connected and monitored from a smartphone. The counter, connected with Cosmo kit via cable to a Cosmo hub (MODI, VISION, THAW.PRO, Levtronic, QUBI) or with Cosmo wi-fi kit, can be monitored by the CosmoApp and receive alerts in case of abnormal operation.

## Technical draw



In order to constantly offer the best possible products we reserve the right to make changes on technical specifications without incurring any obligation for equipment previously or subsequently sold.