

Client _____ Quantity _____
Project _____ Position _____

Vision Industry W35K F

Model: W35KFR

Cod: W81110112002



Vision Industry W35 trolley blast chiller Roll-In F version, temperature range -40°+65°C with humidifier boiler as standard. It is equipped with the functions: blast chilling, blast freezing, manual cycle, thawing, proving, retarded proving, holding, steam sanitising. Remote cooling system with R452a refrigerant gas. Devote™ - Dynamic Evolution Temperature - the innovative system that autonomously recognises the weight, size and temperature of food and automatically shortens the blast chilling or freezing time of hot food without the use of a core probe. 7" touch screen and operating mode with customisable recipes, by time, with core probe or with Devote algorithm. Adjustable ventilation 25-100%, adjustable humidity 45-95%. Blast chilling yield +90/+3°C - 100 Kg; blast freezing yield +90/-18°C - 80 Kg. 5 heavy duty climatic class, forced air defrost. 100 mm insulation thickness - HFO with high insulation performance and low environmental impact (CFC, HCFC, HFC free). Electronic expansion valve and anti-corrosion painted evaporator. Compensation valve to reduce waiting times during frequent door openings. Easily replaceable triple chamber magnetic gasket, core probe with screw connector and led lighting. Exterior and interior AISI 304 stainless steel, interior made of "canvas" steel with special highly durable texture. fan unit and condenser cover removable without tools. Blast chiller supplied assembled. ModBus/RTU Rs485 connection as standard. Cosmo: wi-fi connection for remote monitoring via Cosmo App. When wired to Coldline counters and cabinets acts as a hub for remote monitoring of connected equipment.

Technical data

Max capacity:	1 trolley GN1/1, EN60x40
Temperature range:	-40°+65°C
Ventilation range:	25% - 100%
Humidity range:	45% - 95% with humidifier
Humidifier:	Including
Refrigerant unit:	remote
Yield +90/+3:	100 Kg
Yield +90/-18:	80 Kg
Cooling gas:	R404/R452
Defrost:	Forced air
Valve:	Electronic expansion valve
Dimensions:	1230×1200×2510 mm
Packing dimensions:	1464×1364×2550 mm
Net / gross weight:	310 Kg / 340 Kg
Net / gross volume:	/
Voltage:	400-415 V - 50-60 Hz
Total rate:	3170 W - 12,46 A
Cooling capacity:	11010 W*
*	Evap. -10°C Cond. +45°C

Features

Functions:	Blast chilling, shock freezing, thawing, proving and retarder prover, holding, steam sanitizing, manualcycle
Control:	7" touch screen display with USB port
Door gasket:	Magnetic, triple chamber and easily replaceable
Core probe:	Needle probe with 1 reading point, quick-release and easily replaceable
Insulation:	100 mm thickness - CFC/HCFC free
Exterior/interior finishing:	Internal and external in "linen canvas" steel
Inner corners:	Rounded base 20 mm
Handle:	In AISI 304 stainless steel
Cosmo:	Wi-Fi remote control system

Accessories and variants

Abbattitore fornito smontato	Other special voltage
Floor 20 mm high, ramp included	Open remote condensing unit 4EES-4Y
Reverse door opening from standard	Silenced faired remote condensing unit 4EES-4Y + winter kit -20°
Door opening turning and control panel inversion	PVC ventilation profiles W35K
Door stop 100°	Ramp 100 mm high. Length 913 mm W35
Sonda al cuore 3 punti di lettura	Ramp 140 mm high. Length 1390 mm W35
Sonda al cuore riscaldata 1 punto di lettura	Trolley GN1/1 20 trays 598x530x1630 mm
Winter kit -20°C	Trolley EN60x40 20 trays 460x620x1750 mm
Winter kit -40°C	Purity C Quell ST 50 filter cartridge

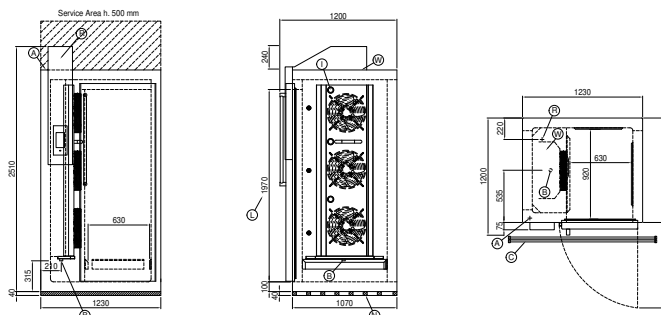
Remote unit technical data

Voltage:	400-415 V 3N - 50 Hz
Assorbimento Unità Remota:	4,98kW - 10,1A
Cooling gas:	R404-R452a
HP unit:	4
Gross weight:	187 Kg
Dimensions:	1110×785×626 mm
Pipe delivery:	12 mm
Pipe suction:	28 mm
Cooling capacity:	Evap. -10°C Cond. +45°C

COSMO - wi-fi control

Cosmo is The Nice Kitchen's exclusive Wi-Fi technology that allows VISION blast chillers to be connected, updated and monitored from smartphones. VISION is also a Cosmo hub and allows remote supervision of the Coldline appliances connected to it. From the CosmoApp you can check the operating conditions of each machine and receive alerts in the event of abnormal operation.

Technical draw



A:	Power supply cable outlet	B:	Condensation water drain	C:	Floor grid for condensate drainage (recommended)
I:	Internal led lighting	L:	Door clear opening dimension	N:	PVC ventilation profiles
R:	Gas output pipes	W:	Water mains connection for humidifier - 3/4" female. Unloading not required		

In order to constantly offer the best possible products we reserve the right to make changes on technical specifications without incurring any obligation for equipment previously or subsequently sold.