

Client \_\_\_\_\_ Quantity \_\_\_\_\_  
Project \_\_\_\_\_ Position \_\_\_\_\_

## Master 700 XL cabinet

Model: AS70/1MRV

Cod: A14071200602



### Technical data

|                     |                                 |
|---------------------|---------------------------------|
| Gross capacity:     | 601 lt                          |
| Temperature range:  | -2°+8°C                         |
| Refrigerant unit:   | remote                          |
| Cooling gas:        | R452a (GWP=2.141)               |
| Defrost:            | Electric                        |
| Valve:              | Supplied standard with solenoid |
| Dimensions:         | 740×815×2085 mm                 |
| Packing dimensions: | 835×930×2138 mm                 |
| Net / gross weight: | 130 Kg / 150 Kg                 |
| Net / gross volume: | 499 lt / 601 lt                 |
| Voltage:            | 220-240 V - 50-60 Hz            |
| Total rate:         | 710W - 3,3A                     |
| Cooling capacity:   | 668 W*                          |
| *:                  | Evap. -10°C Cond. +55°C         |

### Features

|                              |  |
|------------------------------|--|
| Standard equipment:          | 3 slides for 650x588 mm shelves, 3 plastic coated 650x588 mm shelves, lock with key  |
| Control:                     | Electronic, display flush with the panel   |
| Doors:                       | 1 aluminium door, self-closing with 105° latch, right-hand hinges  |
| Door gasket:                 | Magnetic, triple chamber and easily replaceable  |
| Insulation:                  | 75 mm thickness - CFC/HCFC free  |
| Exterior/interior finishing: | Exterior and interior AISI 304 stainless steel. Back, base and internal technical compartment in galvanized/colaminated steel. |
| Inner corners:               | Rounded for easy cleaning and ensuring maximum hygiene   |
| Handle:                      | Stainless steel AISI 304, 2 mm thick   |
| Racks and slides:            | High-strength technopolymer guides fixed to the sides of the chamber   |
| Feets:                       | AISI 304 stainless steel adjustable h 100/150 mm   |
| Cosmo:                       | Predisposed for Cosmo Hub connection   |

## Accessories and variants

|  |                                     |
|--|-------------------------------------|
| Alimentazione frequenza 60Hz                             | Remote condensing unit NEK6210GK    |
| Other special voltage                                    | Foot pedal kit                      |
| Half doors   | 4 Swivel and brake castors h 128 mm |
| Frame for fixed masonry plinth                           | Plastic coated shelf 650x588 mm     |
| RAL customisable colouring                               | Serial interface, RS485 cable       |
| Master Marine solutions                                  | Cosmo cable connection kit          |
| Predisposition for connection to CO2 remote control unit | Cosmo wifi connection kit           |

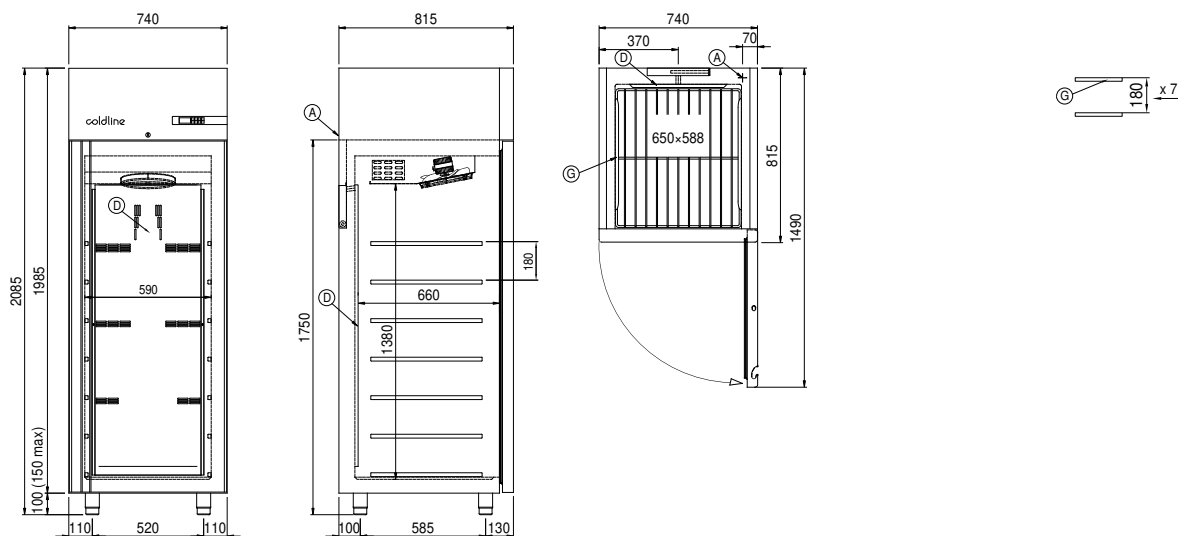
## Remote unit technical data

|                            |                         |
|----------------------------|-------------------------|
| Voltage:                   | 220-240 V - 50 Hz       |
| Assorbimento Unità Remota: | 330W - 1,5A             |
| Cooling gas:               | R452A                   |
| Gross weight:              | 17 Kg                   |
| Dimensions:                | 450x300x270 mm          |
| Pipe delivery:             | Ø 1/4"                  |
| Pipe suction:              | Ø 3/8"                  |
| Packing dimensions:        | 470x330x300 mm          |
| Cooling capacity:          | Evap. -10°C Cond. +55°C |

## COSMO - wi-fi control

Cosmo is The Nice Kitchen's exclusive Wi-Fi technology that allows Coldline, Modular and Nevo appliances to be connected and monitored from a smartphone. The cabinet, connected with Cosmo kit via cable to a Cosmo hub (MODI, VISION, THAW.PRO, LEVTRONIC, QUBI) or with Cosmo Wi-Fi kit, can be monitored by the CosmoApp and receive alerts in case of abnormal operation.

## Technical draw



A: Power supply cable outlet

D: Airflow conveyor

G: Racks pitch