

Client _____ Quantity _____
Project _____ Position _____

Master 700 cabinet

Model: A70/1NRV

Cod: A14071100601



Master 700 refrigerated cabinet, 1 door. Remote refrigeration unit, 4 climatic class and R452a refrigerant gas. Equipment: 3 GN2/1 plastic coated shelves, lock with key, led strip lighting. Temperature range 0°+10°C; ventilated refrigeration. Anti-corrosion treated evaporator, off cycle automatic defrost. 75 mm insulation thickness - HFO with high insulation performance and low environmental impact (CFC, HCFC, HFC free). Black plastic handle and magnetic triple chamber door gasket, easily replaceable. Reversible, self-closing door opening with 105° stop. One-piece structure, interior/exterior AISI 304 stainless steel; outside back, external base and inside technical compartment in galvanised/colaminated steel. Rounded inner corners for easy cleaning. The reinforced modular base in colaminated steel allows installation on wheels, feet, mobile or masonry plinths. Replaceable refrigerant system FSS - Fast Service System - for quick and easy service. Predisposed for connection to Cosmo remote supervision system and ModBus/RTU Rs485 connection.

Technical data

Gross capacity:	601 lt
Temperature range:	0°+10°C
Refrigerant unit:	remote
Cooling gas:	R452a
Defrost:	Off cycle automatic
Valve:	Supplied standard with solenoid
Dimensions:	740×815×2085 mm
Packing dimensions:	835×930×2138 mm
Gross weight:	145 Kg
Voltage:	220-240 V - 50-60 Hz
Total rate:	220 W
Absorbed Current:	1,0 A
Cooling capacity:	668 W*
*:	Evap. -10°C Cond. +55°C

Features

Standard equipment:	3 slides for GN2/1 shelves, 3 plastic coated GN2/1 shelves, lock with key, LED lighting
Control:	Electronic, display flush with the panel
Doors:	1 aluminium door, self-closing with 105° latch, right-hand hinges
Door gasket:	Magnetic, triple chamber and easily replaceable
Insulation:	75 mm thickness - CFC/HCFC free
Exterior/interior finishing:	Exterior and interior AISI 304 stainless steel. Back, base and internal technical compartment in galvanized/colaminated steel.
Inner corners:	Rounded for easy cleaning and ensuring maximum hygiene
Handle:	Stainless steel AISI 304, 2 mm thick
Racks and slides:	High-strength technopolymer guides fixed to the sides of the chamber
Feets:	AISI 304 stainless steel adjustable h 100/150 mm

Accessories and variants

Special rack kit for drawers and shelves

Alimentazione frequenza 60Hz

Other special voltage

Half doors

Frame for fixed masonry plinth

RAL customisable colouring

Master Marine solutions

Predisposition for connection to CO2 remote control unit

Remote condensing unit NEK6210GK

Foot pedal kit

4 Swivel and brake castors h 128 mm

Stainless steel shelf GN2/1

Plastic coated shelf GN2/1

Pair of type C slides 605 mm

Stainless steel drawer, h 150 mm 700/1400

Bottles shelf, stainless steel coating for shelf 700/1400

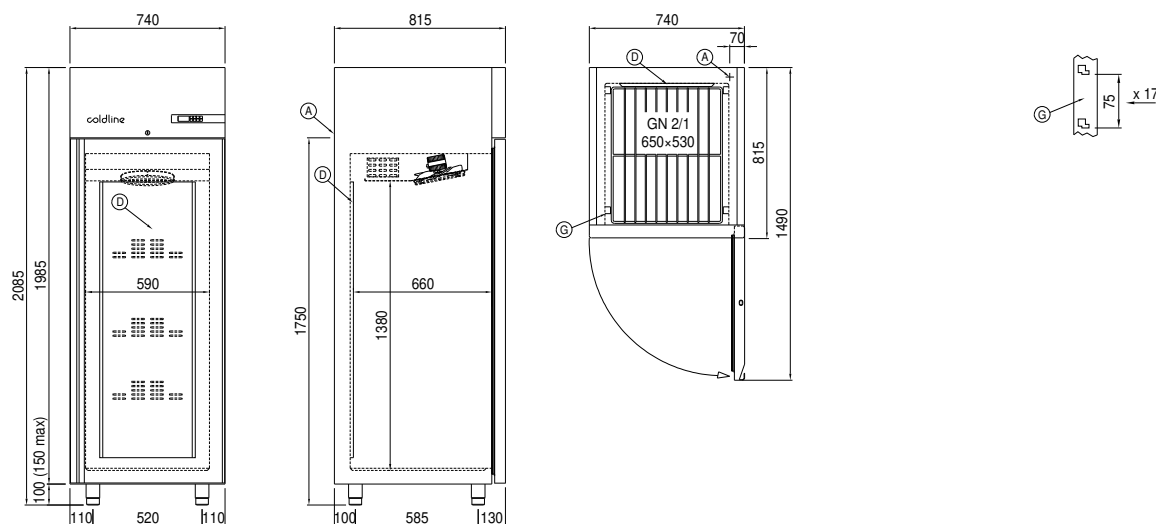
Serial interface, RS485 cable

Cosmo cable connection kit

COSMO - wi-fi control

Cosmo è la tecnologia wifi che permette di connettere e monitorare da smartphone gli apparecchi Coldline. L'armadio, collegato con kit Cosmo ad un Cosmo hub (MODI, VISION o LEVTRONIC) o con Cosmo box wifi, può essere monitorato dalla CosmoApp per ricevere alert in caso di funzionamento anomalo.

Technical draw



A: Power supply cable outlet

D: Airflow conveyor

G: Racks pitch

J: Automatic evaporation of condensing water

In order to constantly offer the best possible products we reserve the right to make changes on technical specifications without incurring any obligation for equipment previously or subsequently sold.