

Client _____ Quantity _____
Project _____ Position _____

Vision C30 cabinet

Model: AC30/1MR

Cod: A62301200101



Technical data

| | |
|---------------------|---------------------------------|
| Max capacity: | 33 trays E |
| Gross capacity: | 622 lt |
| Temperature range: | -5°+15°C |
| Ventilation range: | 50% - 100% |
| Humidity range: | 90% - 40% (T°C > +4°C) |
| Refrigerant unit: | remote |
| Cooling gas: | R452a (GWP=2.141) |
| Defrost: | Electric |
| Valve: | Supplied standard with solenoid |
| Dimensions: | 810×796×2215 mm |
| Packing dimensions: | 905×850×2138 mm |
| Net / gross weight: | 170 Kg / 180 Kg |
| Net / gross volume: | 344 lt / 622 lt |
| Voltage: | 220-240 V - 50-60 Hz |
| Total rate: | 790W - 3,6A |
| Cooling capacity: | 668 W* |
| *: | Evap. -10°C Cond. +55°C |

Features

| | |
|------------------------------|--|
| Functions: | Storage, chocolate, thawing, ice cream |
| Standard equipment: | 20 slides for EN60x40 trays, LED lighting |
| Control: | 7" touch screen display with USB port |
| Doors: | 1 door, self-closing with a 105° stop, right hinged |
| Door gasket: | Magnetic, triple chamber and easily replaceable |
| Insulation: | 75 mm thickness - CFC/HCFC free |
| Exterior/interior finishing: | Exterior and interior AISI 304 stainless steel. Back, base and internal technical compartment in galvanized/colaminated steel. |
| Inner corners: | Rounded for easy cleaning and ensuring maximum hygiene |
| Handle: | In AISI 304 stainless steel |
| Racks and slides: | Stainless steel AISI 304 |
| Feets: | AISI 304 stainless steel adjustable h 100/150 mm |
| Cosmo: | Wi-Fi remote control system |

In order to constantly offer the best possible products we reserve the right to make changes on technical specifications without incurring any obligation for equipment previously or subsequently sold.

Accessories and variants

| | |
|-------------------------------------|--|
| RAL customisable colouring | Aluminium coated backingan EN60x40 h 20 mm |
| Alimentazione frequenza 60Hz | Stainless steel shelf EN60x40 |
| Other special voltage | Plastic coated shelf EN60x40 |
| Remote condensing unit NEK6210GK | Pair of type L slides 398 mm EN |
| 4 Swivel and brake castors h 128 mm | Serial interface, RS485 cable |

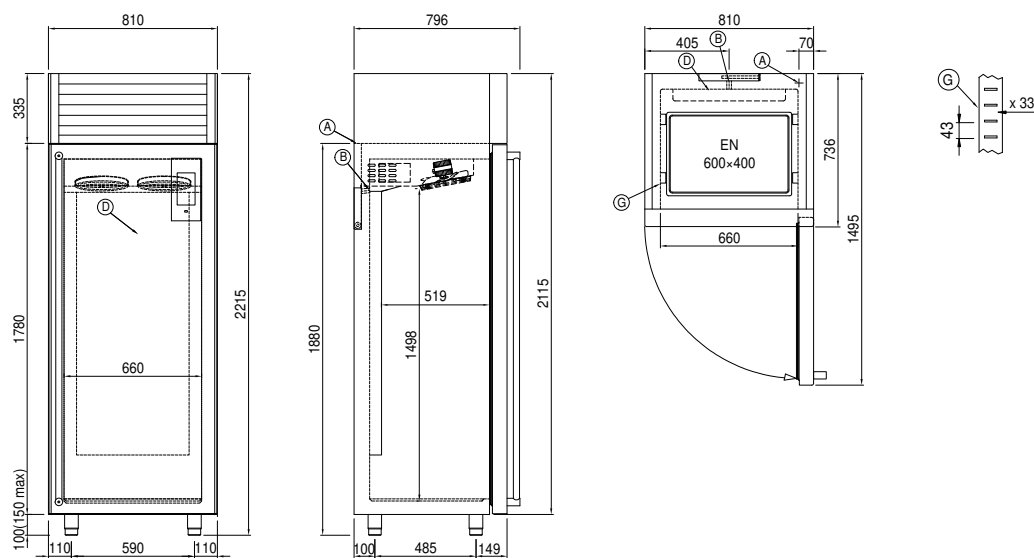
Remote unit technical data

| | |
|----------------------------|-------------------------|
| Voltage: | 220-240 V - 50 Hz |
| Assorbimento Unità Remota: | 500W - 2,3A |
| Cooling gas: | R452A |
| Gross weight: | 16 Kg |
| Dimensions: | 480x330x295 mm |
| Pipe delivery: | Ø 1/4" |
| Pipe suction: | Ø 3/8" |
| Packing dimensions: | 540x345x310 mm |
| Cooling capacity: | Evap. -10°C Cond. +55°C |

COSMO - wi-fi control

Cosmo is The Nice Kitchen's exclusive Wi-Fi technology that allows VISION storage units to be connected, updated and monitored from smartphones. VISION is also a Cosmo hub and allows remote supervision of the Coldline appliances connected to it. From the CosmoApp you can check the operating conditions of each machine and receive alerts in the event of abnormal operation.

Technical draw



A: Power supply cable outlet

D: Airflow conveyor

G: Racks pitch

J: Automatic evaporation of condensing water