

Client _____ Quantity _____
Project _____ Position _____

Master GN counter 3 doors

Model: TP17/1MR-660

Cod: T10311000203

Master refrigerated counter 3 doors, counter body height 660 mm, with top. Remote refrigeration unit, 5 heavy duty climatic class and R452a refrigerant gas. Temperature range -2°+8°C with ventilated refrigeration. Equipment: 1 GN1/1 plastic coated shelf. Each compartment can be configured with 1/2+1/2, 1/3+2/3, 1/3+1/3+1/3 drawers. Anti-corrosion treated evaporator and electric defrosting. 60 mm insulation thickness - HFO with high insulation performance and low environmental impact (CFC, HCFC, HFC free). AISI 304 stainless steel handle and magnetic triple chamber door gasket, easily replaceable. Reversible, self-closing door opening with 105° stop. AISI 304 stainless steel interior/exterior including external back. Rounded inner corners for easy cleaning. The reinforced modular base in colaminated steel allows installation on wheels, feet, mobile or masonry plinths. Replaceable refrigerant system FSS - Fast Service System - for quick and easy service. Prepared for connection to Cosmo - wi-fi remote supervision system - and ModBus/RTU Rs485 connection.



Technical data

| | |
|---------------------|---------------------------------|
| Top: | With top |
| Gross capacity: | 403 lt |
| Temperature range: | -2°+8°C |
| Refrigerant unit: | remote |
| Cooling gas: | R452a (GWP=2.141) |
| Defrost: | Electric |
| Body height: | 660 mm |
| Valve: | Supplied standard with solenoid |
| Dimensions: | 1570×700×800 mm |
| Packing dimensions: | 1875×800×998 mm |
| Net / gross weight: | 126 Kg / 136 Kg |
| Net / gross volume: | 248 lt / 403 lt |
| Voltage: | 220-240 V - 50-60 Hz |
| Total rate: | 810W - 3,7A |
| Cooling capacity: | 668 W* |
| *: | Evap. -10°C Cond. +55°C |

Features

| | |
|------------------------------|--|
| Standard equipment: | 3 slides, 3 plastic coated GN1/1 shelves |
| Control: | Electronic, display flush with the panel |
| Doors: | 3 doors, self-closing, reversible with 105° stop |
| Door gasket: | Magnetic, triple chamber and easily replaceable |
| Insulation: | 60 mm thickness - CFC/HCFC free |
| Exterior/interior finishing: | Exterior interior and back in AISI 304 stainless steel. Base in colaminated steel. |
| Inner corners: | Rounded for easy cleaning and ensuring maximum hygiene |
| Handle: | Stainless steel AISI 304, 2 mm thick |
| Racks and slides: | Stainless steel AISI 304 |
| Feets: | AISI 304 stainless steel adjustable h 100/150 mm |
| Cosmo: | Predisposed for Cosmo Hub connection |

In order to constantly offer the best possible products we reserve the right to make changes on technical specifications without incurring any obligation for equipment previously or subsequently sold.

Accessories and variants

| | |
|--|--|
| Drawers 1/2 | Internal hygiene H3 |
| Drawers 1/3 | Granite flat worktop |
| Drawers 1/3 + 2/3 | Granite worktop with splashback |
| Special counter body heights 650 mm | Remote condensing unit NEK6210GK |
| Special counter body heights 700 mm | Adjustable feet h 145/195 mm |
| Special counter body heights 750 mm | 4 Swivel and brake castors h 128 mm |
| Technical compartment on the left | Brackets for GN pans for drawer |
| Common technical compartment | GN1/2 container + lids kit for drawer, h 150 mm |
| Counters without a technical compartment | GN1/3 container + lids kit for drawer, h 150 mm |
| Lock with key for drawer 1/2 | Bottles shelf, stainless steel coating for shelf 350 |
| Lock with key for drawer 1/3 | Stainless steel shelf GN1/1 |
| Lock with key for drawer 1/3 + 2/3 | Plastic coated shelf GN1/1 |
| LED lighting | Pair of type C slides 505 mm |
| RAL customisable colouring | Serial interface, RS485 cable |
| Stainless steel evaporator | Cosmo cable connection kit |
| Predisposition for connection to CO2 remote control unit | Cosmo wifi connection kit |
| Alimentazione frequenza 60Hz | Removable plinth GN 3DR h 100 mm |
| Other special voltage | Removable plinth GN 3DR h 150 mm |

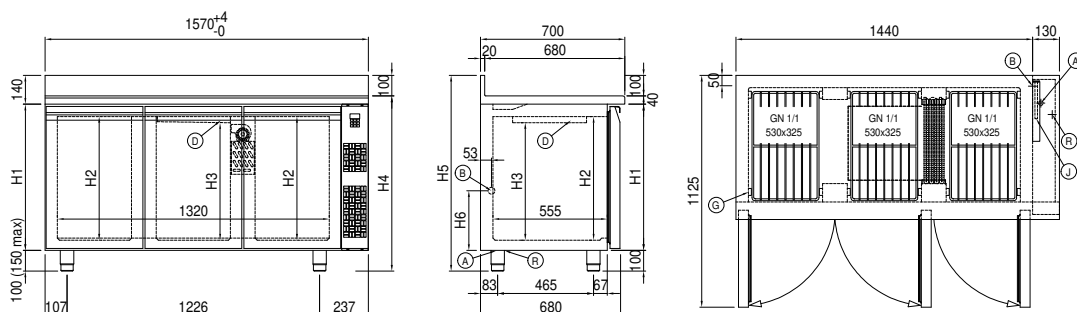
Remote unit technical data

| | |
|----------------------------|-------------------------|
| Voltage: | 220-240 V - 50 Hz |
| Assorbimento Unità Remota: | 500W - 2,3A |
| Cooling gas: | R452A |
| Gross weight: | 16 Kg |
| Dimensions: | 480×330×295 mm |
| Pipe delivery: | Ø 1/4" |
| Pipe suction: | Ø 3/8" |
| Packing dimensions: | 540×345×310 mm |
| Cooling capacity: | Evap. -10°C Cond. +55°C |

COSMO - wi-fi control

Cosmo is The Nice Kitchen's exclusive Wi-Fi technology that allows Coldline, Modular and Nevo appliances to be connected and monitored from a smartphone. The counter, connected with Cosmo kit via cable to a Cosmo hub (MODI, VISION, THAW.PRO, LEVTRONIC, QUBI) or with Cosmo Wi-Fi kit, can be monitored by the CosmoApp and receive alerts in case of abnormal operation.

Technical draw



| | | | | | |
|----|---------------------------|----|---|----|------------------|
| A: | Power supply cable outlet | B: | Condensation water drain | D: | Airflow conveyor |
| G: | Racks pitch | J: | Automatic evaporation of condensing water | R: | Gas output pipes |