

Client _____ Quantity _____
Project _____ Position _____

Master 600 counter 3 doors

Model: TP17/1MQR-760 **Cod:** T12311000202



Technical data

Top:	With top
Gross capacity:	390 lt
Temperature range:	-2°+8°C
Refrigerant unit:	remote
Cooling gas:	R452a
Defrost:	Electric
Body height:	760 mm
Valve:	Supplied standard with solenoid
Dimensions (mm):	1570×600×900 mm
Packing dimensions:	1875×800×998 mm
Gross weight:	144 Kg
Voltage:	220-240 V - 50-60 Hz
Total rate:	810 W
Absorbed Current:	3,7 A
Cooling capacity:	668 W*

Features

Standard equipment:	3 slides, 3 plastic coated 325x430 mm shelves
Control:	Electronic, display flush with the panel
Doors:	3 doors, self-closing, reversible with 105° stop
Door gasket:	Magnetic, triple chamber and easily replaceable
Insulation:	60 mm thickness - CFC/HCFC free
Exterior/interior finishing:	Exterior interior and back in AISI 304 stainless steel. Base in colaminated steel.
Inner corners:	Rounded for easy cleaning and ensuring maximum hygiene
Handle:	Stainless steel AISI 304, 2 mm thick
Racks and slides:	Stainless steel AISI 304
Feets:	AISI 304 stainless steel adjustable h 100/150 mm
Cosmo:	Predisposed for Cosmo Hub connection

Accessories and variants

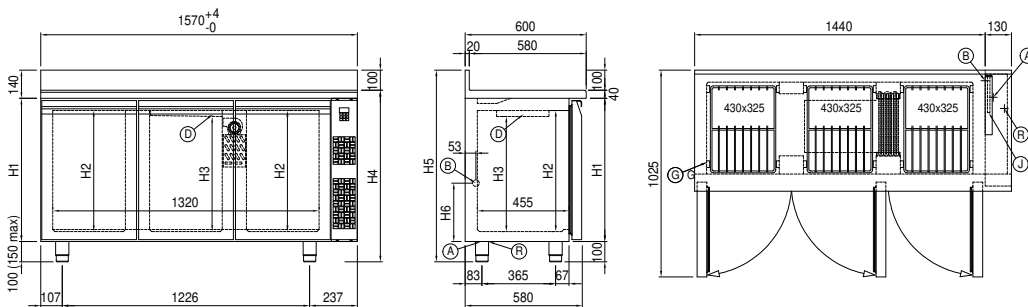
Drawers 1/2
Drawers 1/3
Drawers 1/3 + 2/3
Special counter body heights 650 mm
Special counter body heights 700 mm
Special counter body heights 750 mm
Technical compartment on the left
Common technical compartment
Counters without a technical compartment
Lock with key for drawer 1/2
Lock with key for drawer 1/3
Lock with key for drawer 1/3 + 2/3
Glass door
LED lighting
RAL customisable colouring
Stainless steel evaporator
Predisposition for connection to CO2 remote control unit
Power supply frequency 60Hz

Other special voltage
Internal hygiene H3
Granite flat worktop
Granite worktop with splashback
Remote condensing unit NEK6210GK
Adjustable feet h 145/195 mm
4 Swivel and brake castors h 128 mm
Brackets for GN pans for drawer
GN1/2 container + lids kit for drawer, h 150 mm
GN1/3 container + lids kit for drawer, h 150 mm
Plastic coated shelf 325x430
Pair of type C slides 405 mm
Serial interface, RS485 cable
Cosmo connection kit
Removable plinth CQ 3DR h 50 mm
Removable plinth CQ 3DR h 100 mm
Removable plinth CQ 3DR h 150 mm
R134a valve

Remote unit technical data

Voltage: 220-240 V - 50 Hz

Technical draw



- | | | |
|-------------------------------------|-----------------------------------------------------|----------------------------|
| A: Power supply cable outlet | B: Condensation water drain | D: Airflow conveyor |
| G: Racks pitch | J: Automatic evaporation of condensing water | R: Gas output pipes |

In order to constantly offer the best possible products we reserve the right to make changes on technical specifications without incurring any obligation for equipment previously or subsequently sold.